



MEIJO JAPAN STUDYTOUR



2 0 2 3 W I N T E R

FOUNDED IN 1926

Meijo University

✦ Japanese (language)

✦ International Japanese Studies

✦ Japanese Cultural Experience

✧ About Meijo University

Meijo University (MU) is located in Nagoya, Japan. Established in 1926 as the Nagoya Science and Technology Course, Meijo University is one of the largest universities in the Chubu (Central) Region. It is a hub of learning and research in the region, offering quality education and excellent infrastructure to students from all around the world. Meijo University has produced 3 Nobel Prize winners in the field of Chemistry (Dr. Akira Yoshino in 2019) and Physics (Dr. Isamu Akasaki & Dr. Hiroshi Amano in 2014).

✧ About This program

The objective of this program is to help the participants understand more about Japan and promote international exchange. Class content includes International Japanese Studies, Japanese language, and Japanese culture experience; classes about Japanese culture, society, art, and pop culture. In addition to learning classroom Japanese, participants can interact with Meijo Japanese students on campus to put what you have learned into practice.

✧ Previous Participants' voice

This has been a wonderful experience throughout, and I didn't want it to end. I look forward to seeing everyone again in the future!

It was a really good and fun program. I had an excellent time. I liked it a lot!

I really loved the program, got to learn a lot and grow as a person.

Our Main Courses



J-POP MUSIC

MANGA

JAPANESE TEA CEREMONY



Japanese language

This course is aimed for all participants who want to learn Japanese. We provides courses in 3 levels, from beginners to advanced learners.



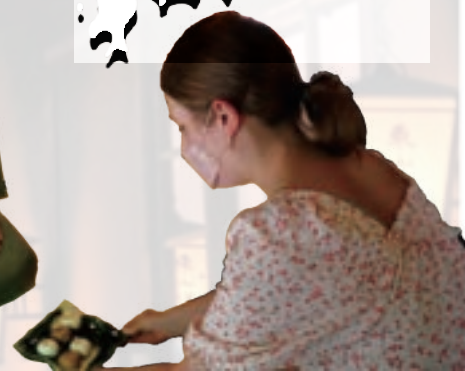
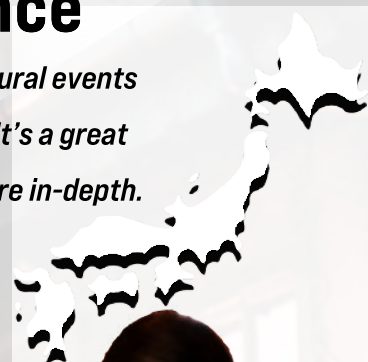
International Japanese Studies

International Japanese Studies will be taught in English to learn more about its culture, history and Chubu (Central) Region around us. Chubu Region is located between East Japan, which includes the Kanto/Tohoku Regions and Hokkaido, and West Japan, which comprises the Kinki/Chugoku/Shikoku/Kyushu Regions. Chubu Region is formed by Greater Nagoya (Chubu District), and is one center of Japan's culture and industry along with Greater Tokyo (Capital District) and Greater Osaka (Kansai District). In this lecture, we will aim to deepen your understanding of the history and culture of Chubu Region. From history of Japan to a part of Japanese Pop Culture, you can explore a wide variety of fields about Japan.



Japanese Cultural Experience

MU will organize various exciting and popular cultural events (Manga, J-POP Music, and Japanese Idol Culture). It's a great opportunity for you to learn about Japanese culture in-depth.



■ 2023 MEIJO JAPAN STUDY TOURS [WINTER]

Program Duration: January 10-January 27, 2023 (3 weeks)

Application Deadline: November 5, 2022

Program Fee: JPY140,000 per person

contents	
Japanese	12
International Japanese Studies	11
Japanese Cultural Experience	7
Field trip	3
Cultural Exchange Activities	5
Free Day	3

*The schedule may be subject to change.

B: Breakfast L: Lunch D: Dinner

WEEK 1: Nagoya Dome-Mae Campus/Tempaku Campus																									
TIME	Check-in	B	O	DAY1	B	O	DAY2	B	O	DAY3	B	O	DAY4	B	O	DAY5	B	O	DAY6	B	X				
	9-Jan	L	X	10-Jan	L	X	11-Jan	L	X	12-Jan	L	X	13-Jan	L	X	14-Jan	L	X	15-Jan	L	X				
	Mon	D	O	Tue	D	O	Wed	D	O	Thu	D	O	Fri	D	O	Sat	D	O	Sun	D	X				
1	9:10~10:40	Arriving Date・Dormitory Check-In 1/6~1/8		Orientation			Japanese			Japanese			Japanese			Free Day									
2	10:50~12:20		Japanese			International Japanese Studies			International Japanese Studies			International Japanese Studies													
*	12:20~13:00																								
3	13:10~14:40		Japanese Cultural Experience Manga・Illustration			Japanese Cultural Experience Osu Shopping District/Maid Cafes			Japanese Cultural Experience J-POP Music Samisen			Cultural Exchange Activities with Meijo Students													
4	14:50~16:20																								
5	16:30~18:00																								
WEEK 2: Nagoya Dome-Mae Campus/Tempaku Campus																									
TIME	DAY7	B	O	DAY8	B	O	DAY9	B	O	DAY10	B	O	DAY11	B	O	DAY12	B	O	DAY13	B	O				
	16-Jan	L	X	17-Jan	L	X	18-Jan	L	X	19-Jan	L	X	20-Jan	L	X	21-Jan	L	X	22-Jan	L	X				
	Mon	D	O	Tue	D	O	Wed	D	O	Thu	D	O	Fri	D	O	Sat	D	X	Sun	D	X				
1	9:10~10:40	Japanese			Japanese			Japanese			Japanese			Japanese Cultural Experience Miso Nikomi Udon			Field Trip Kyoto and Nara								
2	10:50~12:20	International Japanese Studies			International Japanese Studies			International Japanese Studies			International Japanese Studies														
昼	12:20~13:00																								
3	13:10~14:40	Japanese Cultural Experience Arimatsu Narumi Tie-Dyeing			Japanese Cultural Experience Zazen Japanese Tea Ceremony			Free Time			Cultural Exchange Activities with Meijo Students			Cultural Exchange Activities with Meijo Students Atusta Jingu Shrine・Shirotori Garden											
4	14:50~16:20																								
5	16:30~18:00																								
WEEK 3: Nagoya Dome-Mae Campus/Tempaku Campus																									
TIME	DAY14	B	O	DAY15	B	O	DAY16	B	O	DAY17	B	O	DAY18	B	O	Check-out	B	O							
	23-Jan	L	X	24-Jan	L	X	25-Jan	L	X	26-Jan	L	X	27-Jan	L	X	28-Jan	L	X							
	Mon	D	O	Tue	D	O	Wed	D	O	Thu	D	O	Fri	D	O	Sat	D	O							
1	9:10~10:40	Japanese			Japanese			Japanese			Japanese			Field Trip Field trip to Tokai			Dormitory Check-Out								
2	10:50~12:20	International Japanese Studies			International Japanese Studies			International Japanese Studies			International Japanese Studies														
昼	12:20~13:00																								
3	13:10~14:40	Japanese Cultural Experience Cloisonne			Cultural Exchange Activities with Meijo Students			Cultural Exchange Activities with Meijo Students			Free Time														
4	14:50~16:20																								
5	16:30~18:00																								

SHORT TERM PROGRAM

MEIJO JAPAN STUDY TOUR

【2023 WINTER】

Application Guideline

The following is the guideline of Meijo University's short term program (2023 MEIJO JAPAN STUDY TOUR). The program has been designed for students who are studying at our current, and future, partner universities. It is a 3-week program totally operated in English. It is designed for students who are interested in Japanese culture.

1. Requirements to apply

Each applicant must satisfy all of the following points.

- (1) Applicant is studying at our current and future partner universities.
- (2) Applicant must be enthusiastic to take part in international exchange activities organized by MU.

2. Duration of the programs

■ 2023 MEIJO JAPAN STUDY TOUR-Winter

【Program Duration】 from January 10th, 2023 to January 27th, 2023 (3 weeks)

【Numbers of Participants】 20~30

【Program Fee】 JPY140,000 per person

※Due to the effects of COVID-19 there may be changes to the program schedule, the application requirements etc.

3. Details of program

(1) Program policy

The program provides opportunities to understand more about Japan in English while participants are learning basic Japanese. This program does not grant credits, but will issue a certificate of completion.

(2) Program Contents

We provide the following contents specially designed for 2023 MEIJO JAPAN STUDY TOUR-Winter.

■ Japanese (language)

This course is aimed for all participants who want to learn Japanese. We provides courses in 3 levels, from beginners to advanced learners. Please note that an applicant cannot decide the courses by him/herself and the decision will be made by Meijo University.

■ International Japanese Studies

International Japanese Studies will be taught in English to learn more about its culture, history and Chubu (Central) Region around us. From history of Japan to Japanese Pop Culture, you can explore a wide variety of fields about Japan. One course includes four 90-minute lectures/lessons in a week.

■ Japanese Cultural Experience

MU will organize various exciting and popular cultural activities (Manga, Pop music, and Japanese Idol Culture). It's a great opportunity for you to learn about Japanese culture in-depth.

4. Dormitory

Name	① Female dormitory: Dormitory Akaike 5-210 Akaike, Nisshin-shi, Aichi-ken 470-0125 Japan ② Male dormitory: Dormitory Kawana 2-3-17 Hanamitori Showa-ku, Nagoya-shi, Aichi-ken 466-0831 Japan	
Nearest Station	5-minute walk from “Kawana” station and “Akaike” station of the subway Tsurumai Line	
Facility	Rooms	All single rooms
	Inside	Lights, Air Conditioning, Bed& Bedding, Wash Basin ,Curtain, Desk, Chair, Closet
	Shared Facilities	Shower room, Bath tub, Toilet, Wash Basin, Fridge, Mini Kitchen Security Automated Door, Coin-op Laundry (Washing Machines and Dryers available), Rooftop clothes drying place
	Others	Apartment Manager is at the reception on Weekdays 9:00~17:00
	Space	9.72m ² ~ #The sizes slightly vary depends on the rooms
	Internet	free Wi-Fi connection is available
Duration of stay	The duration of your stay is decided by MU to cover the period of the program. Participant is requested to leave the dormitory on/before 28th of January.	
Meals	Cafeteria is available in the dormitory, you can also easily find many restaurants and convenience stores around the dormitory. Breakfast / 6:30~8:30 (Sat.6:30~10:30) Dinner /18:30~22:30 (Sat.18:30~21:00) Sundays/Holidays...closed	
Notes	#No guests are allowed to stay over nights #No Smoking and No drinking	



5. Program Fee

JPY140, 000 per person

Waived	Tuition, airport pick-up fee, administration fees, field trips, Wi-Fi fee (total:JPY151,000)
Included	Japanese Cultural Experience fees, *manaca (JP¥8000), *accommodation (with breakfast and dinner), domestic travel insurance. * manaca is an IC (smart) card that holds electronic money which can be used to pay for railway tickets. * No meals on the Saturdays and public holidays.
Not included	Round-trip flight ticket, visa fees , overseas insurance voucher, personal allowances ※Every participant is requested to individually join overseas travel insurance .

Tuition: ~~JPY151,000~~(Waived)

Fee: JPY140, 000

Grand total: JPY 140,000*

* We will announce the bank account details as soon as we finalize the total number of participants.

* We accept Japanese Yen only. Applicant must make the exact amount of Yen remittance without any excess nor lack of money. Applicant must pay all additional charges for making the remittance, including these service charges at the local bank and main bank in your home country.

6. Important Dates and Plans (Tentative)

November 5th, 2022	Submitting application form deadline.
Middle Nov.	Paying program fees
Middle Nov.	Taking Online Japanese placement test
Middle Dec.	Applying a Visa in your country
Middle Dec.	Attending Pre-departure Online Orientation
6 th ~8 th Jan, 2023	Arriving Date/ Dormitory Check-In.
10 th Jan.	2023 MEIJO JAPAN STUDY TOUR-Winter begins
27 th Jan.	2023 MEIJO JAPAN STUDY TOUR-Winter ends
28 th Jan.	Dormitory Check-Out.

7. Date of Arrival

The actual date will be informed after the application is accepted. Please note that participant should arrive on the designated date. MU staff will be at **Chubu International Airport** on the arrival date to pick up participants.

8. Other matters to pay attention

(1)All participants will attend pre-departure online orientation sessions that give a comprehensive overview of the program content, communications, emergency measures, and more.

(2)While staying in Japan participants are not allowed to drive a car or to operate anything which requires a license. In addition to the above mentioned, MU may stop the program and advise to leave Japan in case of unreported absence, unfavorable academic performance or negligence of guidance by MU.

【Got a Question? Contact Us】

If you have any questions please do not hesitate to contact to us.

Meijo University Office of International Affairs

1-501 Shiogamaguchi, Tempaku-ku, Nagoya 468-8502 Japan

E-mail : mint@ccml.meijo-u.ac.jp

TEL : +81-52-838-2043

9. Documents required for applying

Application for 2023 MEIJO JAPAN STUDY TOUR-Winter short term program is to be submitted to MU only through the Internet. Please refer to the online form in the following pages and submit before the deadline. A list of documents to submit is as follows.

■ List of documents to submit

Application Deadline: November 5th, 2022

	Document	Explanation	How to submit
(A)	Photograph of the face (size : 4cm x 3cm)	A photograph of the face taken within three months (JPEG File)	To be uploaded See 10.
(B)	Certificate of academic record issued by your university (in English or Japanese)		All documents should be in one PDF file and to be uploaded See 10.
	Certificate of enrollment issued by your university (in English or Japanese)		
	Passport copy (A page showing your face photograph)		

10. Information on Online Form for Registration

#For student log-in URL

1. Access from the following link to register as an applicant.

URL: <https://bit.ly/2EeWVEu>

■ Log-in ID for students

*IDs are set differently according to which university you belong to/work for

To enter, click “Short term Program” button.

A student will be asked to decide and input his/her own e-mail address and password. He or she can correct or continue by logging back into the same account.

■ Once you register your information, you may correct it from the URL below.

<https://bit.ly/2q1HrPK>

In order to correct you need e-mail address and Password that you set when registered.

#Log-in ID for students

IDs are set differently according to which university you belong to/work for

University	ID
CUNY Hunter College	MJ_HUNTER
Utah Tech University	MJ_DSU
Murray State University	MJ_MSU
Lewis-Clark State College	MJ_LCSC
University of Quebec in Montreal	MJ_UQAM
Queensland University of Technology	MJ_QUT
University of Augsburg	MJ_AUG
University of Oslo	MJ_UIO
Baruch College of The City University of New York	MJ_BARUCH
Northern Arizona University	MJ_NAU
The University of Hull	MJ_HULL
University of York	MJ_YORK
University of Miskolc	MJ_MSKLC
ICN Graduate Business School	MJ_ICN
The University of New South Wales	MJ_UNSW
The University of Melbourne	MJ_UMELB
Newcastle University	MJ_NCL
La Trobe University	MJ_LTRB
The University of Queensland	MJ_UQ
University of Tasmania	MJ_UTAS
The University of Western Australia	MJ_UWA
Macquarie University	MJ_MQ
RMIT University	MJ_RMIT
Victoria University of Wellington	MJ_WGTM
University of Auckland	MJ_AKL
University of Otago	MJ_OTAGO
University of Canterbury	MJ_UOC
Massey University	MJ_MASSEY
University of Zaragoza	MJ_UNIZAR
University of Keele	MJ_KL
University of Zurich	MJ_UZH
Jaume I University	MJ_UJI
Tamkang University	MJ_TKU
Fu Jen Catholic University	MJ_FuJen
Ming Chuan University	MJ_MCU

(1) Online Form . . . How to register

[Please input information to online form with alphabets.](#)

1. Access <https://bit.ly/2EeWVEu> and enter your university ID, then click “login.”



2. Select “Short term program



3. Enter necessary information in alphabets.



(2) Uploading materials and documents**(A) ID Photo**

基本情報 (Applicant's Information)	
顔写真貼付Photo (4.0cm × 3.0cm) The photo has to be taken within 3 months *	<input type="button" value="ファイルを選択"/> 選択されていません

⇒ In “Applicant’s Information” section, upload ID Photo taken within 3 months with JPEG format.

“ID photo” means;

- Your head must face the camera directly with full face in view.
- You must have a neutral facial expression or a natural smile, with both eyes open.
- Use a plain white or off-white background

添付ファイル(attached file)			
添付ファイル1(attached file 1)*	Download (a) file(s), enter your information, then attach it/them. <input type="button" value="Summer School Students"/> <input type="button" value="Exchange Students"/> <input type="button" value="ファイルを選択"/> 選択されていません	添付ファイル2(attached file 2)*	<input type="button" value="ファイルを選択"/> 選択されていません

- ① Certificate of academic record
- ② Certificate of Enrolment
- ③ Passport Copy



Scan the above and convert them into 1 PDF file.
Then upload from “ファイルを選択” button.